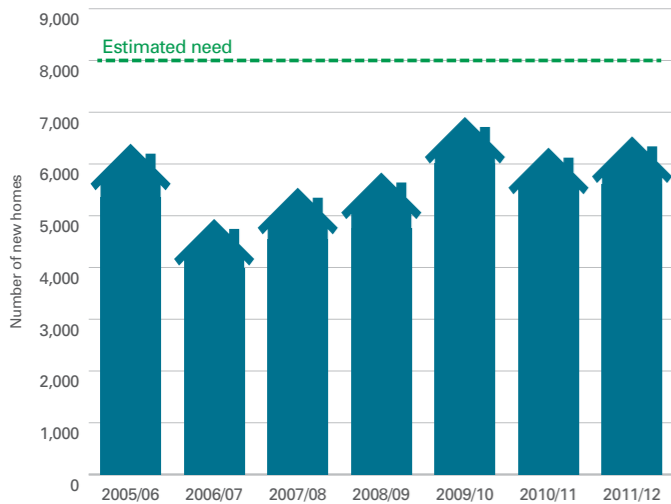


Councils and RSLs have not built the number of new homes that Scottish Government research in 2005 suggested were needed



Estimated number of additional households in Scotland in the next 25 years

500,000

Projected increase in the number of single person households between 2012 and 2035

44 per cent

75 per cent

Projected increase in the number of people aged 75 and over between 2012 and 2035

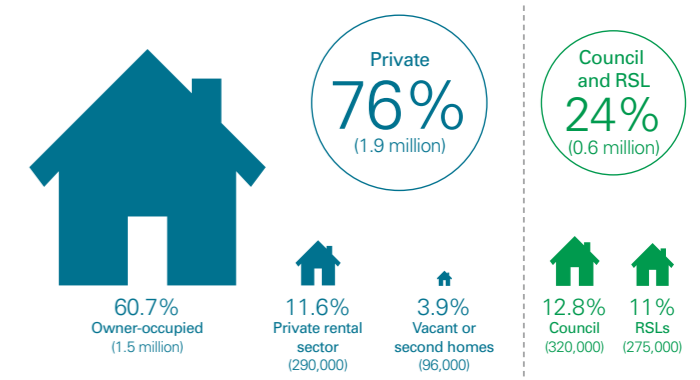
17 per cent

Reduction in the number of households assessed as homeless between 2010/11 and 2011/12

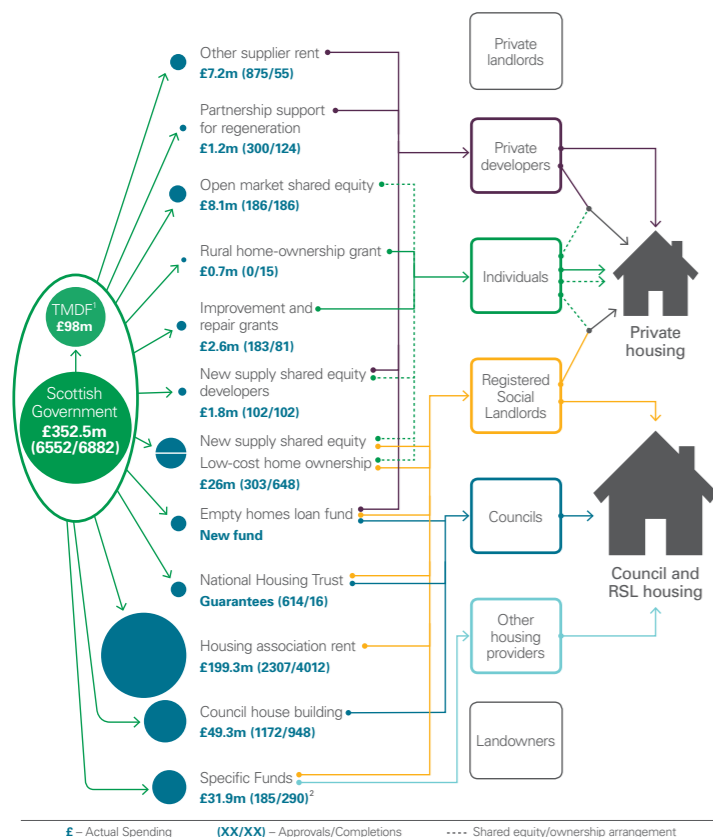
54 per cent

Reduction in the number of new homes built by the private sector between 2007/08 and 2011/12

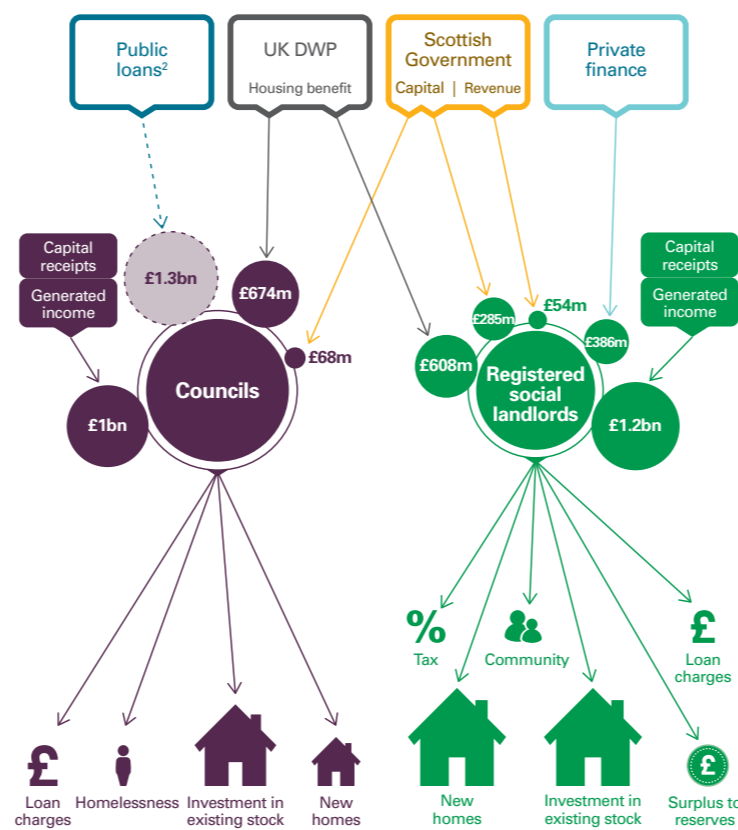
Three-quarters of homes in Scotland are in the private sector



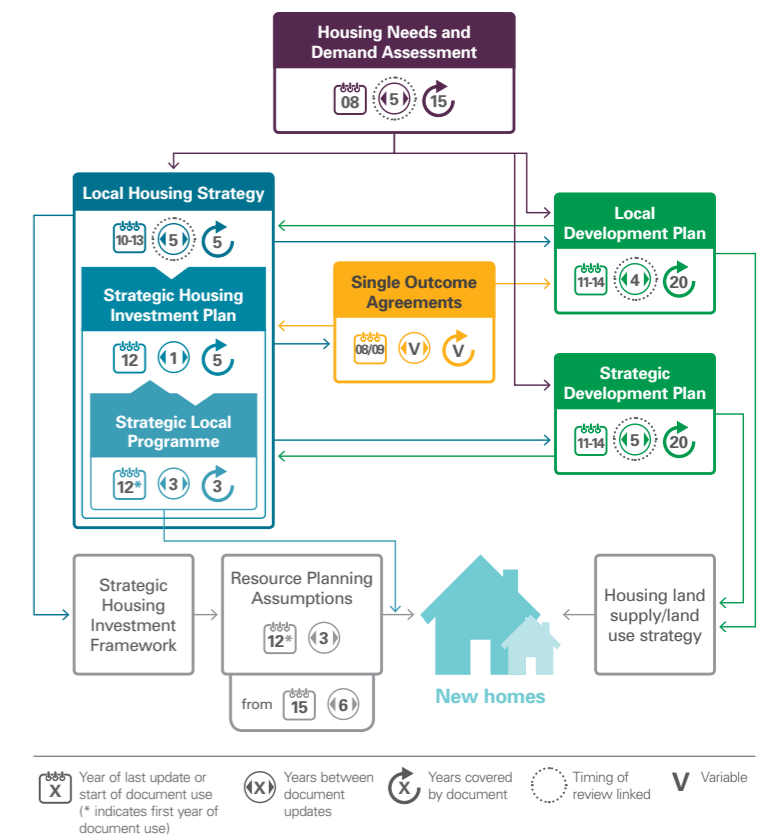
There are multiple funding streams for new housing



Funding arrangements are complex and involve significant amounts of public money



Planning for housing at a local level is complicated



Notes:
1. TMDf – Transfer of management of development funding.
2. Glasgow Housing Association. Re-provisioning activity only (£11.5m).

Notes:
1. These figures are approximations based on published information.
2. It is not clear how much of this is spent on housing.

Legend for planning diagrams:
X: Year of last update or start of document use (* indicates first year of document use)
X: Years between document updates
X: Years covered by document
O: Timing of review linked
V: Variable